



**Premier  
Properties**  
Perth

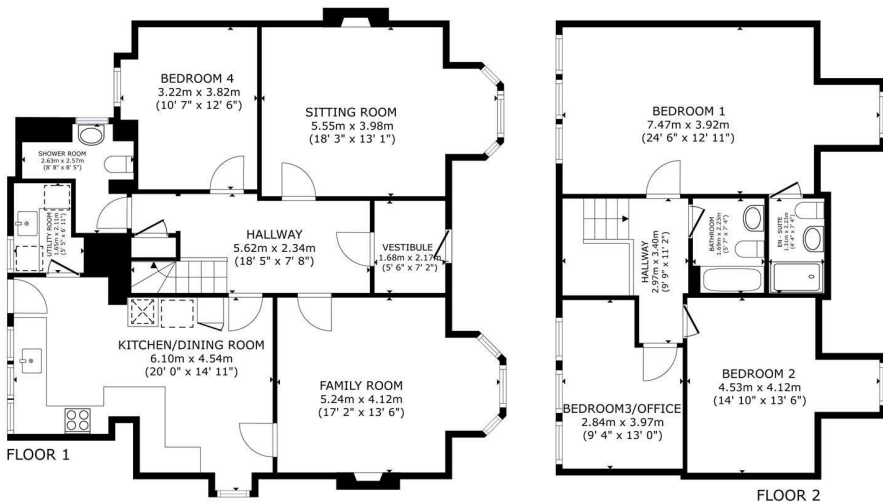


**Bellevue Main Street, Perth, PH2 9PJ**  
**Offers Over £375,000**

 4  3  2  D

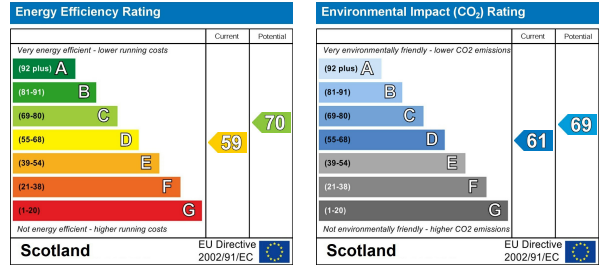


- Detached villa
- 4 bedrooms
- 3 bathrooms
- Gas central heating
- Private rear garden
- Off street parking
- Double glazing throughout
- Local schooling
- Easy access to transport
- Viewing highly recommended



**Bellevue, Main Street, Bridge of Earn, Perth, PH2 9PJ**

FLOOR 1 102.3 m<sup>2</sup> (1,101 sq.ft.) GROSS INTERNAL AREA  
 FLOOR 2 66.5 m<sup>2</sup> (716 sq.ft.)  
 TOTAL: 168.8 m<sup>2</sup> (1,817 sq.ft.)  
 SIZES AND DIMENSIONS ARE APPROXIMATE, ACTUAL MAY VARY.



These particulars, whilst believed to be accurate are set out as a general outline only for guidance and do not constitute any part of an offer or contract. Intending purchasers should not rely on them as statements of representation of fact, but must satisfy themselves by inspection or otherwise as to their accuracy. No person in this firm's employment has the authority to make or give any representation or warranty in respect of the property.